

①

Tva ben (sid 1)

Två ben (sid 2)

fl
trå

Handwritten musical notation for the first system, featuring flute (fl) and trumpet (trå) parts. The notation includes various notes, rests, and accidentals (sharps, flats, naturals) across two staves.

Handwritten musical notation for the second system, featuring piano accompaniment. It consists of two staves with chords, arpeggios, and melodic lines, including various accidentals.

Handwritten musical notation for the third system, featuring piano accompaniment. It consists of two staves with chords, arpeggios, and melodic lines, including various accidentals.

Handwritten musical notation for the fourth system, featuring piano accompaniment. It consists of two staves with chords, arpeggios, and melodic lines, including various accidentals.

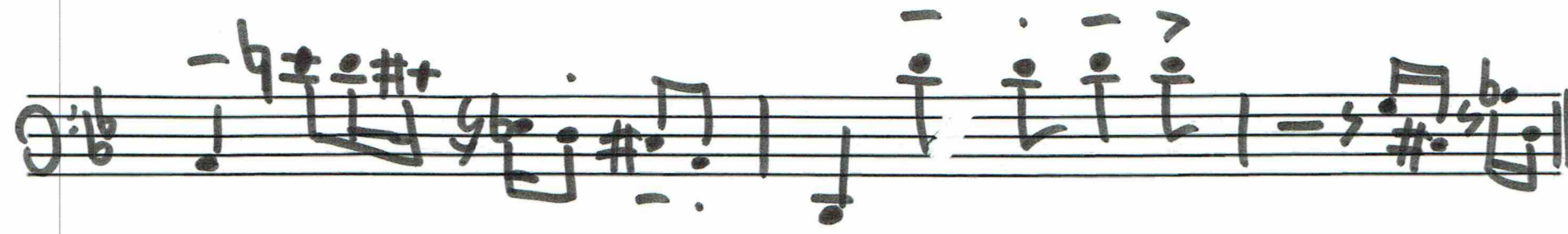
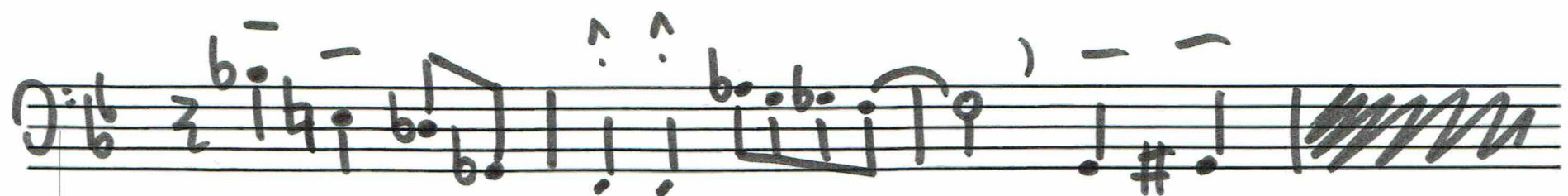
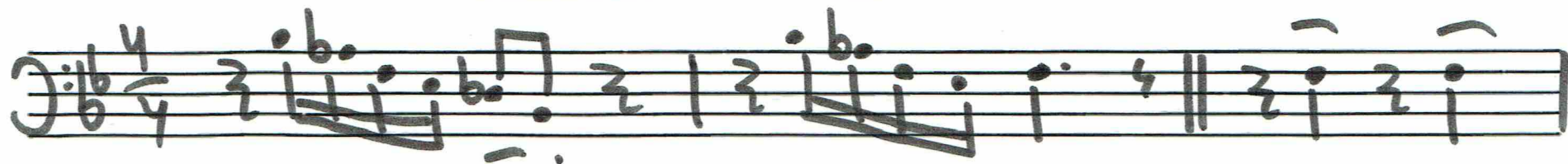
Handwritten musical notation for the fifth system, featuring piano accompaniment. It consists of two staves with chords, arpeggios, and melodic lines, including various accidentals. The system concludes with the instruction "D.C. al ♩".

Handwritten musical notation for the sixth system, featuring piano accompaniment. It consists of two staves with chords, arpeggios, and melodic lines, including various accidentals. The system concludes with a double bar line.

Cello opt.

TVÅ BEN

sid 1/2



TVÅ BEN OPT. CELLO SID 2/2

