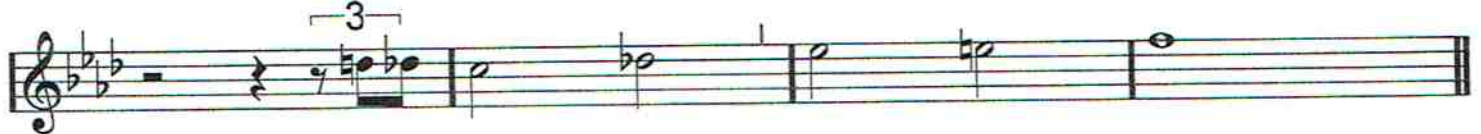


Flöjt (opt.)

SVANSEN

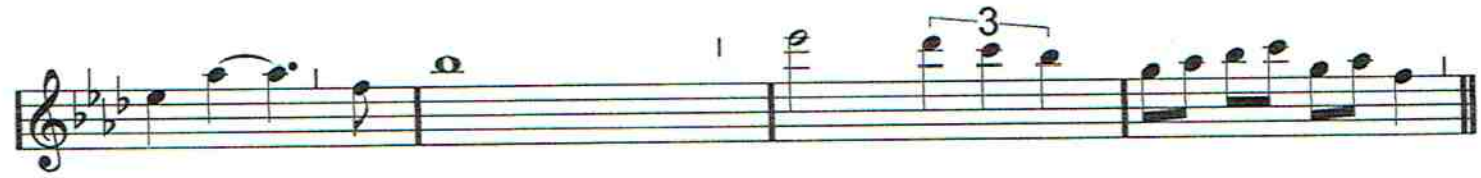
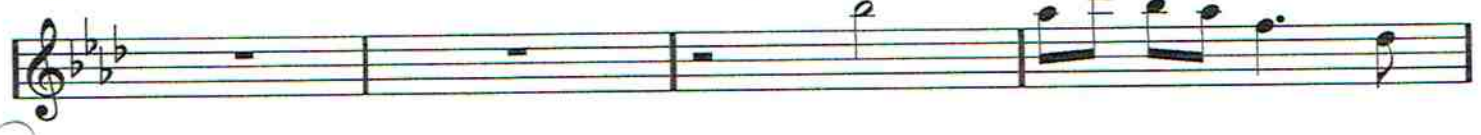
(jämnt åttondelar)

A

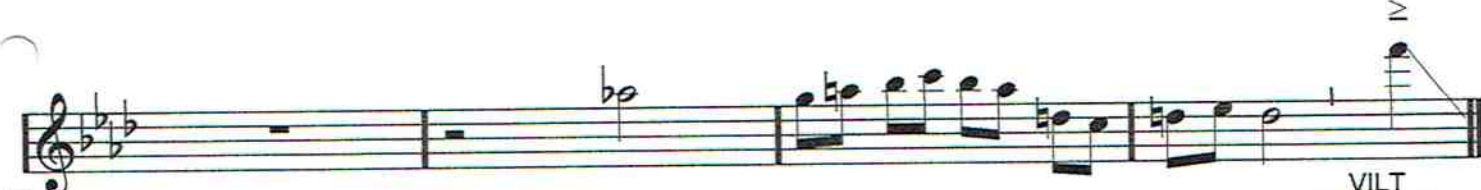
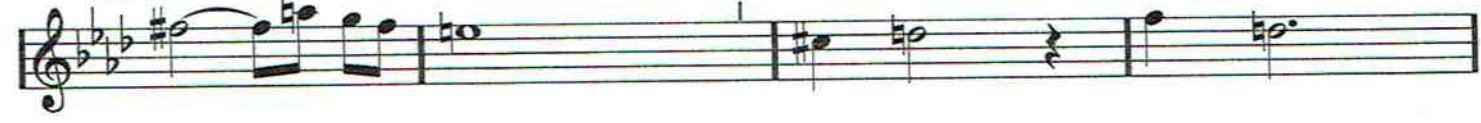


B

"SOLO":




C



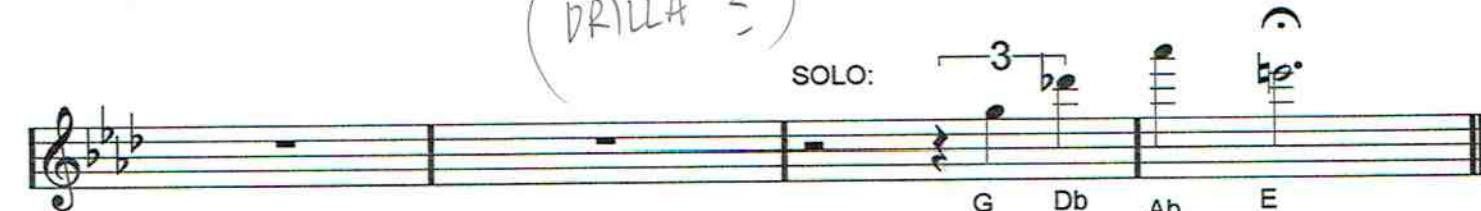
VILT SOLOFALL

D

SOLO: 



Bb
(DRILLA ?)



p G Db Ab E

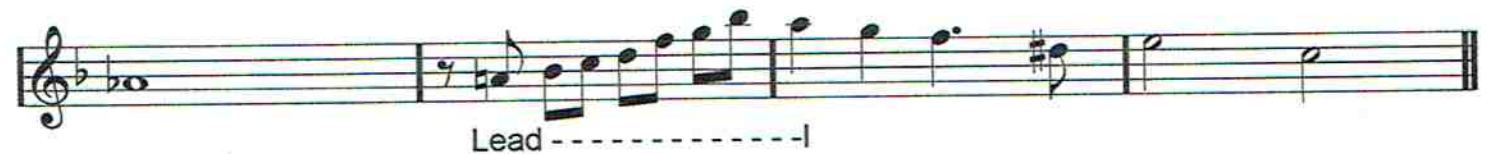
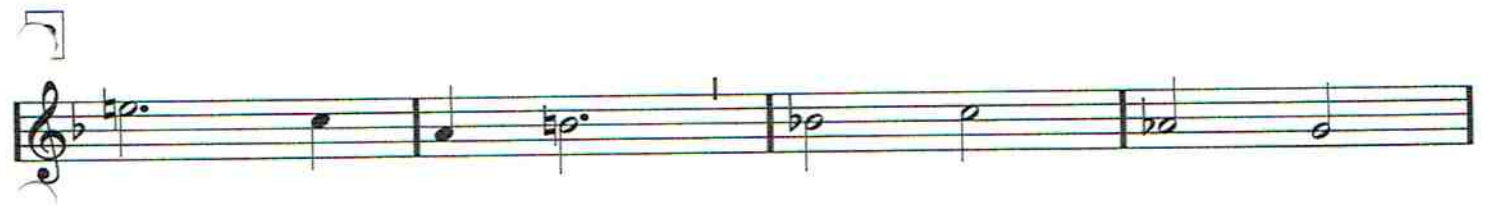
ALTSAX

SVANSEN

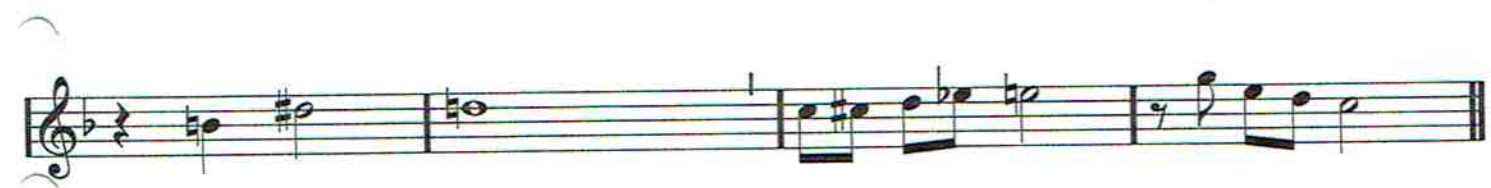
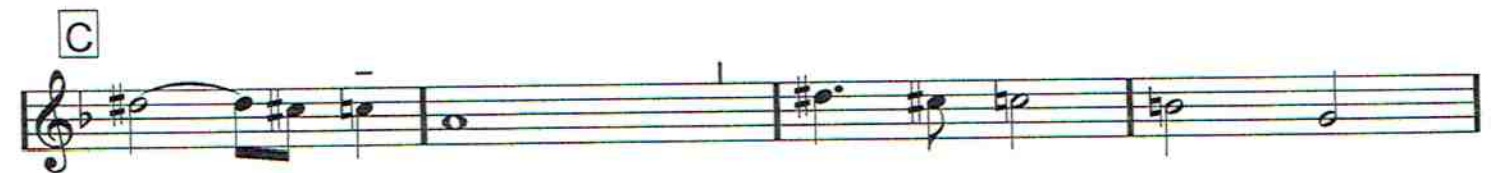
(mystiskt)

(jämnt åttodelar)

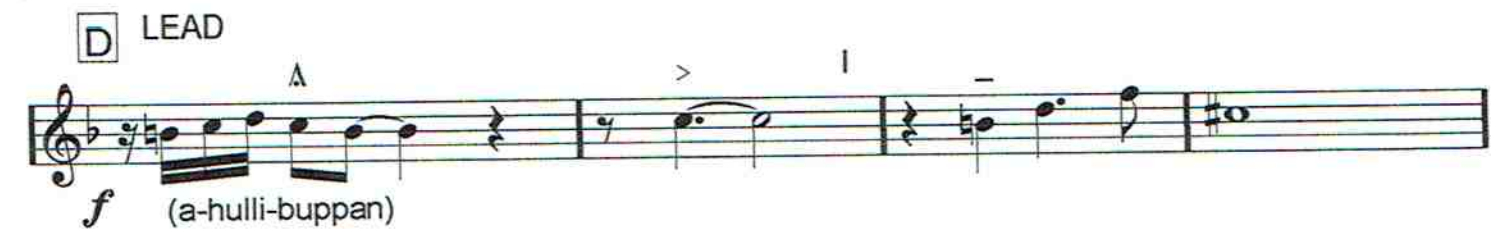
A



C



D LEAD



f (a-hulli-buppan)



pp

optional
att 2

- Svansen -

(even 8s)

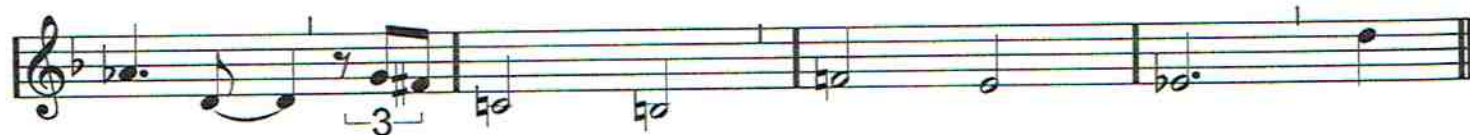
Handwritten musical score for 'Svansen' (even 8s). The score is written on a single staff with a treble clef and a key signature of one sharp (F#). It consists of three main sections labeled A, B, and C. Section A starts with a circled 'A' and contains the first two lines of music. Section B starts with a circled 'B' and contains the third line of music. Section C starts with a circled 'C' and contains the fourth, fifth, and sixth lines of music. The music includes various note values, rests, and dynamic markings such as '(p)'. There are also some handwritten annotations like 'L3' and '6' with arrows.

Barytonsax

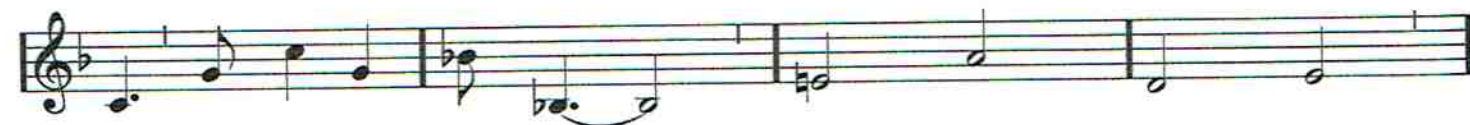
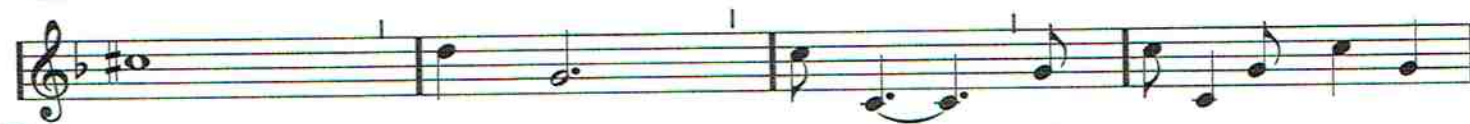
SVANSEN

(jämnta åttondelar)

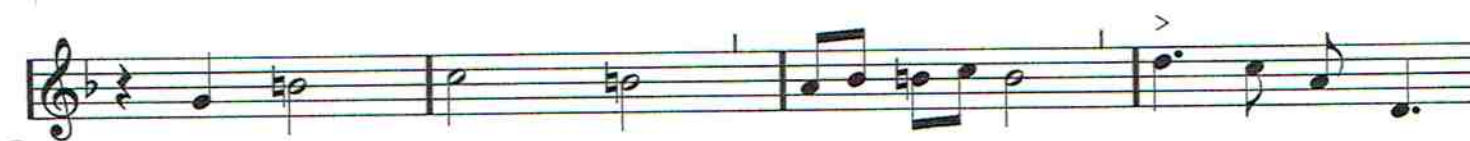
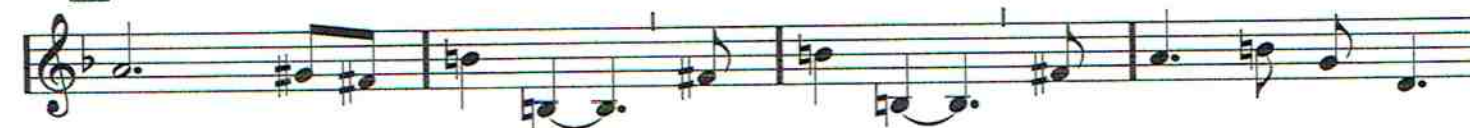
A



B



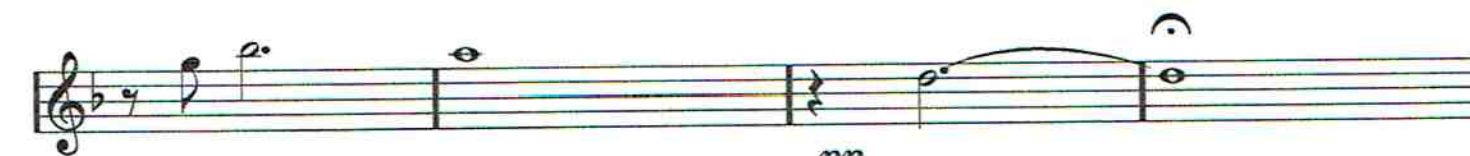
C



D



f (a-hulli-buppan)



pp

Trumpet

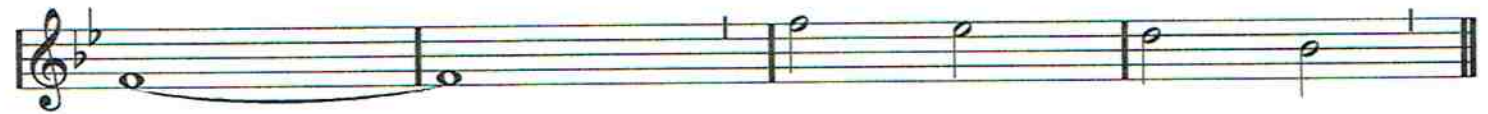
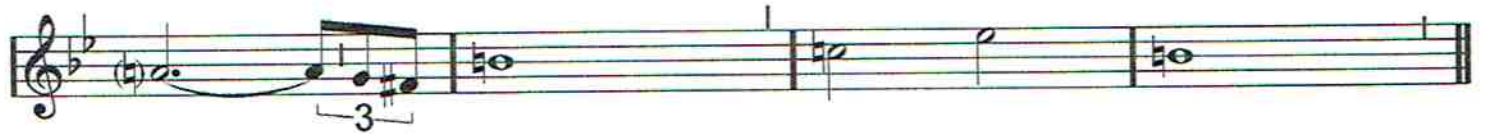
SVANSEN

Dicken Hedrenius

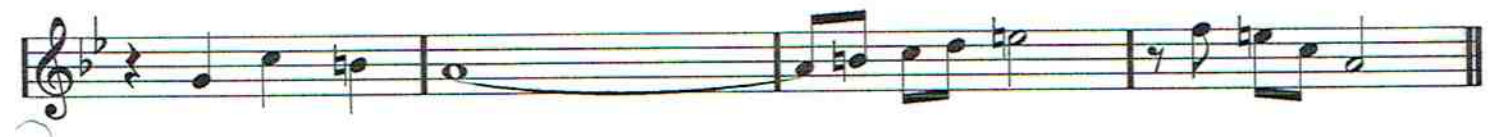
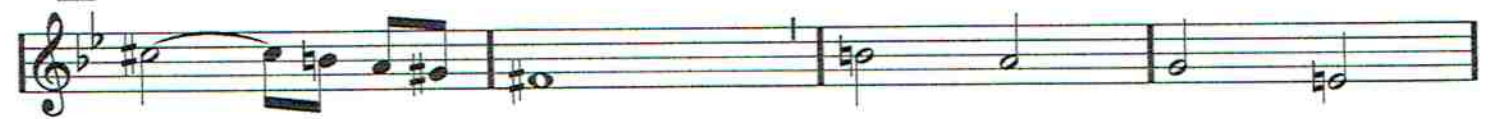
(jämna åttondelar)

Långsam bolero

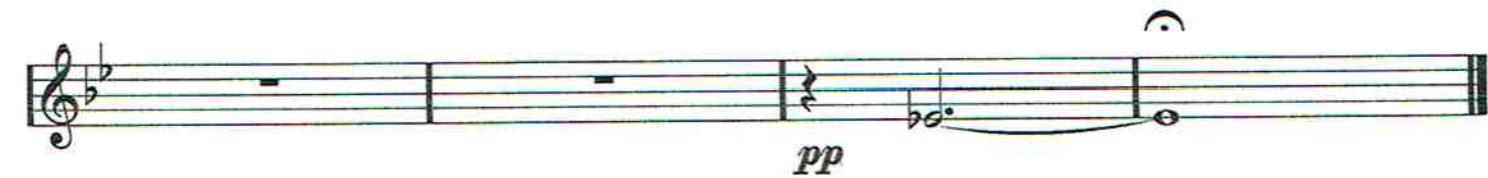
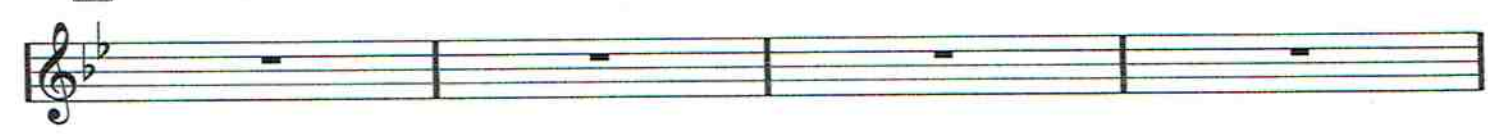
A LEAD



C



D



Optional trumpet 2

gr. 9

SVANSEN

Musical score for optional trumpet 2, titled "SVANSEN". The score is written on a grand staff with a treble clef and a key signature of one flat (Bb). It consists of several measures of music, including rests and dynamic markings.

Measure 1: **A (muted)**. Notes: Bb, A, G, F, E, D, C, Bb. Fingering: 3 7, 3 7. Dynamic: *p.*

Measure 2: Notes: Bb, A, G, F, E, D, C, Bb. Dynamic: *p.*

Measure 3: **B**. Notes: Bb, A, G, F, E, D, C, Bb. Dynamic: *p.*

Measure 4: **TACET**. Notes: Bb, A, G, F, E, D, C, Bb. Dynamic: *p.*

Measure 5: **C**. Notes: Bb, A, G, F, E, D, C, Bb. Dynamic: *p.*

Measure 6: Notes: Bb, A, G, F, E, D, C, Bb. Dynamic: *p.*

Measure 7: **D TACET**. Notes: Bb, A, G, F, E, D, C, Bb. Dynamic: *p.*

Measure 8: **TACET** followed by **PLAY**. Notes: Bb, A, G, F, E, D, C, Bb. Dynamic: *p.*

Empty musical staves for continuation of the score.

Trombon

SVANSEN

(jämnta åttondelar)

A

First staff of section A: Bass clef, 4/4 time signature, key signature of three flats. The staff begins with a whole rest followed by the instruction "(pukor)". The melody starts with a half note G2, followed by quarter notes F2, E2, D2, C2, B1, A1, G1, and a triplet of F1, E1, D1.

Second staff of section A: Continuation of the melody from the first staff. It features a triplet of G1, F1, E1, followed by quarter notes D1, C1, B0, A0, and a final quarter note G0.

B

First staff of section B: Bass clef, 4/4 time signature, key signature of three flats. The melody consists of quarter notes G1, F1, E1, D1, C1, B0, A0, and G0.

Second staff of section B: Continuation of the melody from the first staff. It features a half note G0, followed by quarter notes F0, E0, D0, C0, B0, and A0.

C

First staff of section C: Bass clef, 4/4 time signature, key signature of three flats. The melody starts with a half note G0, followed by quarter notes F0, E0, D0, C0, B0, A0, and a half note G0.

Second staff of section C: Continuation of the melody from the first staff. It features a half note G0, followed by quarter notes F0, E0, D0, C0, B0, A0, and a half note G0.

D

First staff of section D: Bass clef, 4/4 time signature, key signature of three flats. The staff contains four measures, each with a whole note G0. The first measure is marked with a forte *f* dynamic and an accent (>). The other three measures are marked with an accent (>).

Second staff of section D: Bass clef, 4/4 time signature, key signature of three flats. The staff contains four measures. The first two measures have whole notes G0 with accents (>). The third measure has a whole note G0 with a piano *pp* dynamic and an accent (>). The fourth measure has a whole note G0 with a fermata.

(opt. trb II)

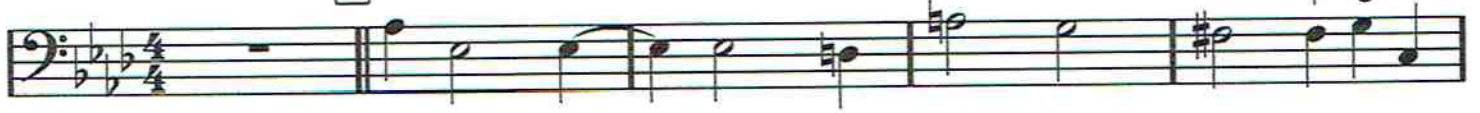
- Svansen -

Handwritten musical score for "Svansen" in C major, 3/4 time. The score consists of seven staves. It includes dynamic markings like "p.", "p.", and "p.", and performance instructions such as "SOLO" and "FINE". Chord boxes labeled A, B, C, and D are present. The piece ends with a double bar line and the word "FINE".

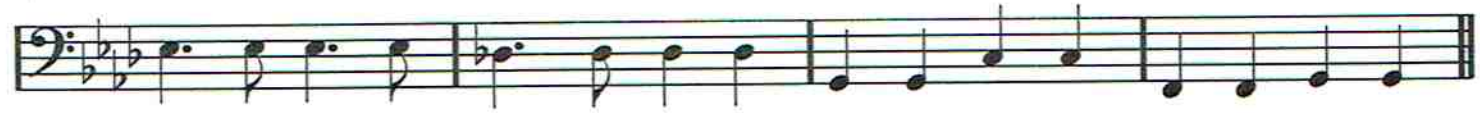
Four empty musical staves at the bottom of the page.

SVANSEN

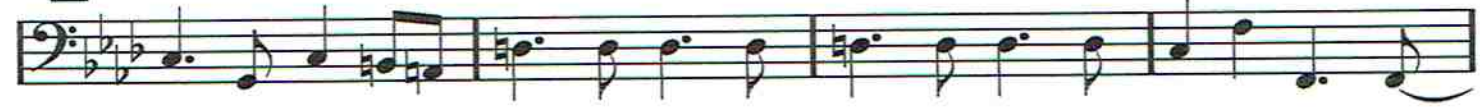
A



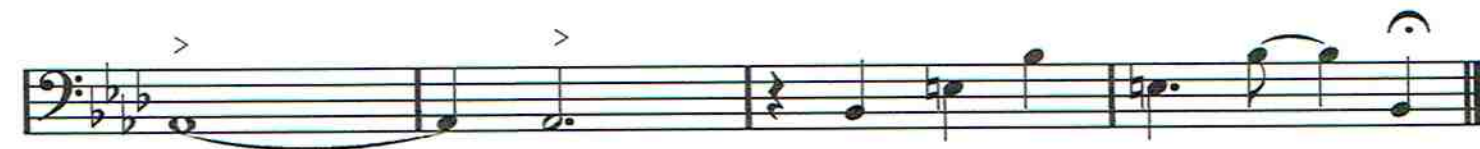
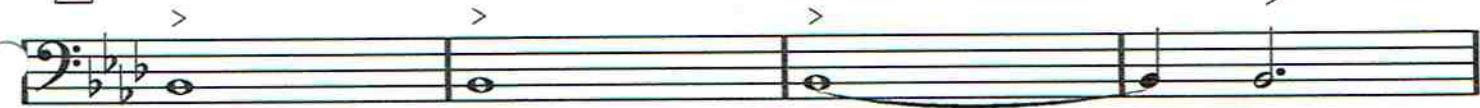
B



C



D

*p* "SOLO"

SVANSEN

SOLO

A KOMP

3

mp Filtklubbor, adlib komp

B

mf

C

(*mp*)

(FILL) *mf*

D

KRASCH, BOM
PANG ETC.
f (KOMPA OCH FYLL)

p (smådallra)