

(FLÖTT)  
OPTIONAL STAVFEL

Handwritten musical score for three staves. The top staff is a treble clef with a key signature of two flats and common time. It contains a melodic line with triplets and a final chord marked (G B<sup>b</sup> D F). The middle staff is a treble clef with the same key signature, containing a bass line with triplets and a final chord marked with a sharp. The bottom staff is a bass clef with the same key signature, containing a simple harmonic accompaniment. The piece ends with a double bar line and the word '(FINE)'.

SOLON:

16  
∞

(on cue: d.c. al fine)

A series of ten empty musical staves for a solo section.

altsax

- Stafvel

(5)

(förebärande, utan ondskefullhet)

ACKORD

tenorsaxofon    Stavfel

p. (FINE)

ACKORD

Dm | Am | / | Dm

D7<sup>69</sup> | Gm7 | C7 | F#m7<sup>65</sup> | F#7

E7m<sup>65</sup> | A7 | Dm | Gm7 | F7 | E7m<sup>65</sup> | Eb7 | D

barytonsax

# Stavfel

(5)

(SOLO)

(ensemble)

L (SOLO)

# 0 ||

(FINE) (Last time: fermato på sista tonen)

(SOLO -  
ACKORDS)

Am | Em | F# | Am

A7<sup>b9</sup> | Dm7 | Gm7 | Cm7<sup>b9</sup> | F#7<sup>b9</sup>

F#m7<sup>b9</sup> | E7 | Am | Gm7 | G7 | F#m7<sup>b9</sup> | B<sup>b</sup>7 | A

Trumpet

Staffel

5

Snabb ballad

LEAD (NO LEAD)

LEAD

P. 2 (FIVE)

ACKORD

Dm | Am | % | Dm

D7<sup>69</sup> | Gm7 | C7 | F#m7<sup>65</sup> | H7

E7m<sup>65</sup> | A7 | Dm Gm7 F7 | E7m<sup>65</sup> E6D7 | D

Trombone - Stavfel

(5)

Handwritten musical notation for Trombone, Stavfel. The notation is on four staves. The first staff is a treble clef with a key signature of two flats (Bb, Eb) and a 3/4 time signature. It contains a melodic line with various notes, rests, and ornaments. The second and third staves continue the melody with some triplets and slurs. The fourth staff ends with a double bar line and the word '(FINE)' written below it.

ACKORD

Handwritten musical notation for chords. The notation is on three staves. The first staff is a treble clef with a key signature of two flats and contains four measures of chords: Cm | Gm | Gm | Cm. The second and third staves list various chords: C7<sup>b5</sup> | Fm7 | B<sup>b</sup>7 | Em7<sup>b5</sup> A7<sup>b9</sup>, Dm7<sup>b5</sup> G7 | Cm Bm7<sup>b5</sup> E<sup>b</sup>7 | Dm7<sup>b5</sup> D7<sup>b9</sup> | C.

(opt. trb II)

Starfel

(A)

FINE

(B)

SOLON 16 ∞ || on cue: D.C. al FINE

# STAVFEL

Handwritten musical notation for guitar. The treble staff shows chords Cm9, Gm9, and F# Ab0. The bass staff shows a melodic line with notes and rests.

Handwritten musical notation for guitar, showing a bass staff with chords: C7<sup>b9</sup>, Fm9/B<sup>b</sup>, B<sup>b</sup>13<sup>b9</sup>, Em7<sup>b5</sup>, and A7<sup>b9</sup>(65).

Handwritten musical notation for guitar, showing a treble staff with chords: Dm7<sup>b5</sup>, G7<sup>alt</sup>, Cm, Bm9, E<sup>b</sup>13, Dm7<sup>b5</sup>, D<sup>b</sup>7, and C (DUR). Includes a circled 'P.' and a circled '5'.

FINE

# SOLOACKORD

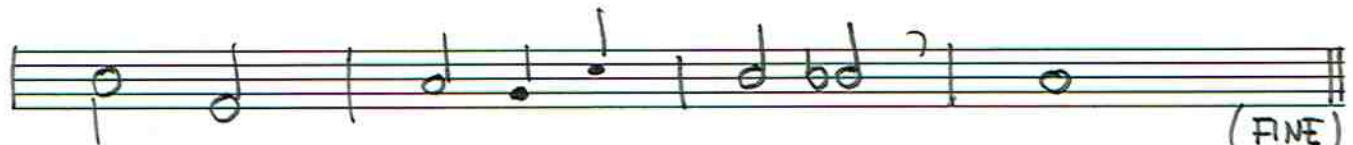
Handwritten musical notation for guitar, showing a treble staff with chords Cm, Gm, and Cm. The bass staves show chords: C7<sup>b9</sup>, Fm7, B<sup>b</sup>7, Em7<sup>b5</sup>, A7, Dm7<sup>b5</sup>, G7, Cm, Bm7, E<sup>b</sup>7, Dm7, D<sup>b</sup>7, and C (DUR). Includes a circled 'P.' and a circled '5'.



BAS

STAVFEL

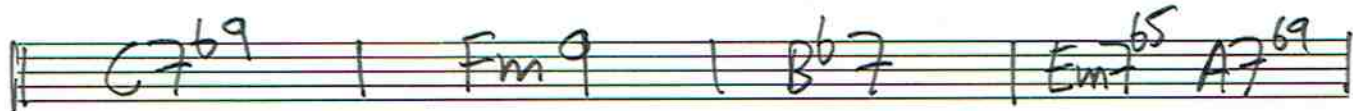
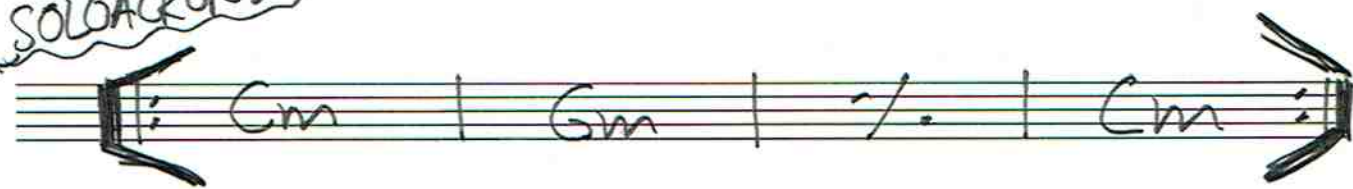
5



(FINE)

(Last time:  
Fermato på sista tonen)

SOLOACKORD



(trummor)

5

# STAVFEL

(slow ballad medium swing, triolfeeling, men sista 8 viss dubbel-tempoantydning.)

A

(moll) (Boogieshuffle)

(d. 4/4)

P. P. FINE

(FERMATO SISTAGÅNGEN)

(SOLO:)

4 komp 4 komp 4 komp

36

① - Starfei

Handwritten musical score for the first system, consisting of four staves. The top staff is a treble clef with a 3/4 time signature. The second and third staves are bass clefs. The bottom staff is a treble clef. The music includes various notes, rests, and accidentals.

Handwritten musical score for the second system, consisting of four staves. The top staff is a treble clef with a 3/4 time signature. The second and third staves are bass clefs. The bottom staff is a treble clef. The music includes various notes, rests, and accidentals. A '1-4' bracket is visible on the left side of the second staff.

Two empty musical staves at the bottom of the page.

2

Handwritten musical score for five staves. The first staff has a treble clef and a key signature of one flat. The second staff has a bass clef and a key signature of one flat. The third staff has a treble clef and a key signature of one sharp. The fourth staff has a treble clef and a key signature of one flat. The fifth staff has a bass clef and a key signature of one sharp. The score includes various musical notations such as notes, rests, and chords. There are handwritten annotations 'p.' and 'Dm7 5' with a circled '5' and a 'C'.

A series of empty musical staves with a vertical line drawn across them. There are some handwritten notes and symbols on the staves, including a circled 'a', a 'b0', and a 'C'.