



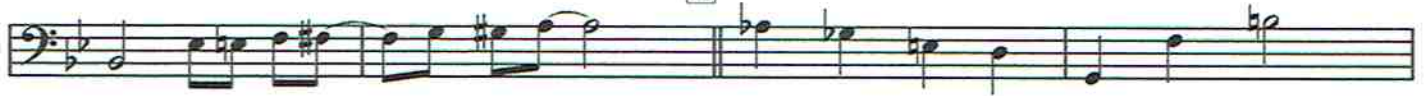
Trombon

sida 2/2 RIALABLUESEN

D



E



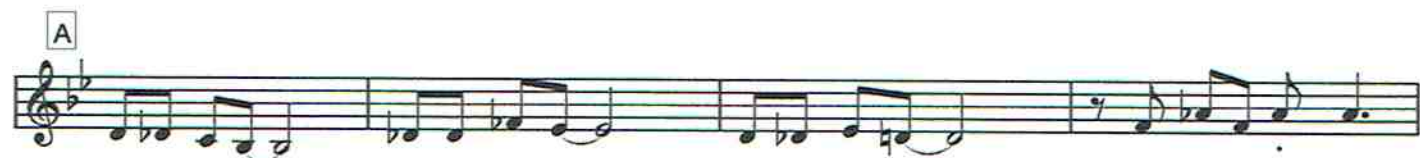
# RIALABLUESEN

Solo



pedal..... pedal.....

A



FINE

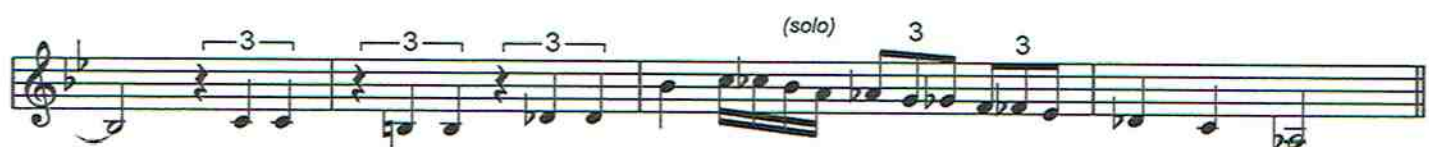
B Lead (lägg gärna till en oktav, uppåt eller nedåt)



(flöjtlead, ej extra oktav)



(solo)



C



Vibrafon

sida 2/2 RIALABLUESEN

**D** SOLO ADLIB

Musical staff with a treble clef and a key signature of two flats. The first two measures contain a melodic line: G4, A4, Bb4, A4, G4, F4, E4, D4. The third and fourth measures contain the chord **Bb7**.

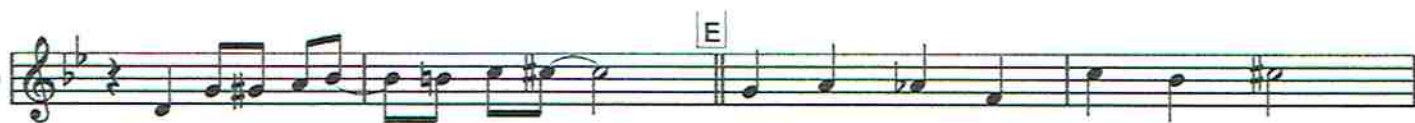
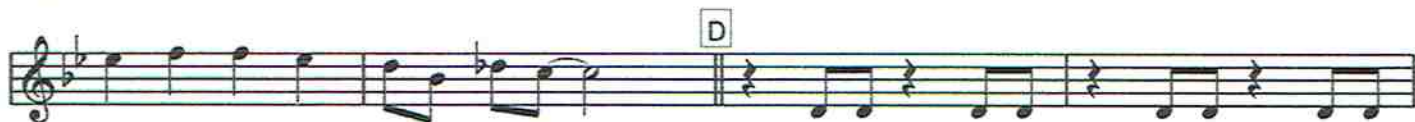
Musical staff with a treble clef and a key signature of two flats. The first two measures contain the chord **Bb7**. The third measure contains the chord **Eb7**. The fourth measure contains the chords **Eb7** and **F7**.

Musical staff with a treble clef and a key signature of two flats. The first two measures contain the chord **Bb7**. The third measure contains the chord **F7**. The fourth measure contains the chord **Eb7**. The text *(solo slut)* is written above the staff.

Musical staff with a treble clef and a key signature of two flats. The first two measures contain rests. The third measure contains a key signature change to one flat, indicated by **(Bb)**. The fourth measure contains a rest. A box containing the letter **E** is positioned above the staff.

Musical staff with a treble clef and a key signature of two flats. The first two measures contain rests. The text **DA CAPO AL FINE** is written to the right of the staff.





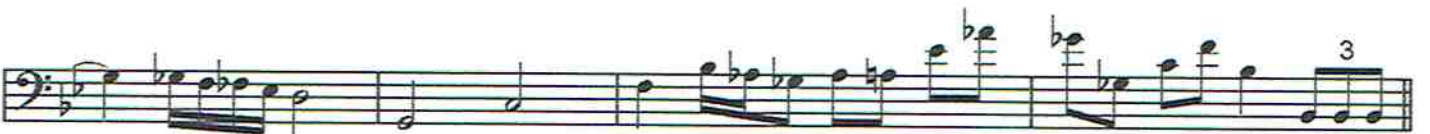
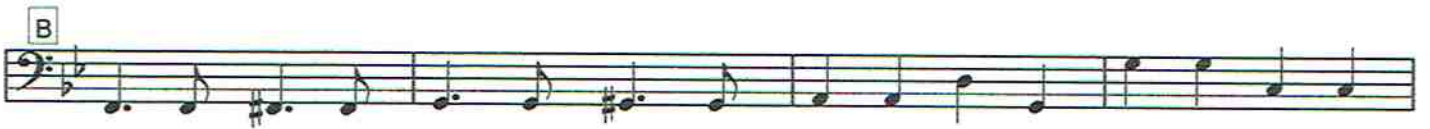
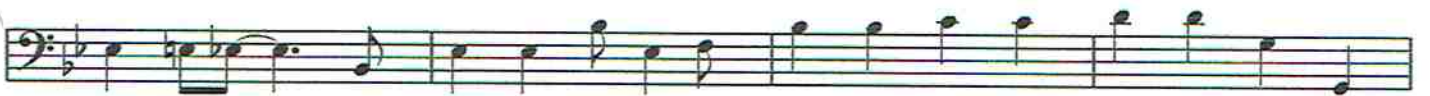
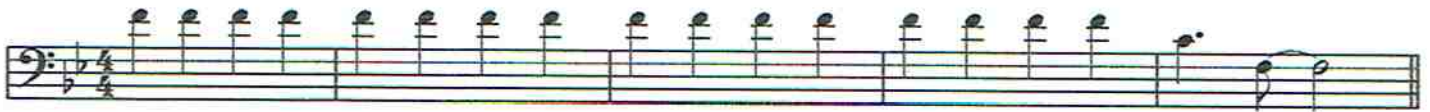






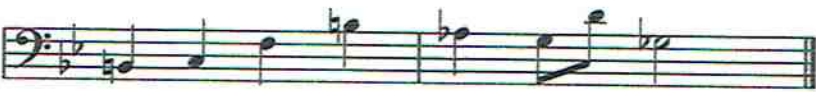
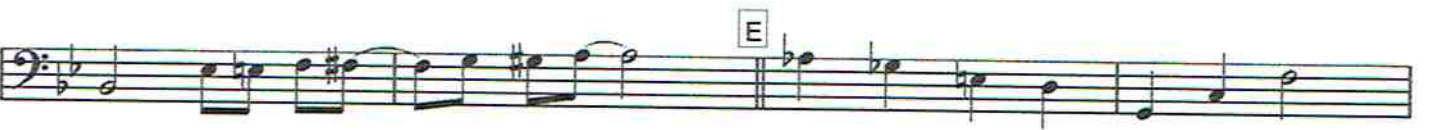
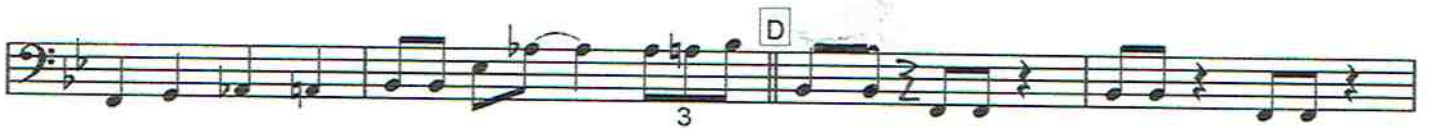
Bas      sida 1/2  
(optional)

# RIALABLUESEN



Bas

sida 2/2 RIALABLUESEN (optional bas)



DA CAPO AL FINE

# RIALABLUESEN

Flöjt 1

Musical staff for Flöjt 1, 4/4 time signature, key of Bb. The staff contains a melodic line starting with a whole rest, followed by quarter and eighth notes.

Flöjt 2

Musical staff for Flöjt 2, 4/4 time signature, key of Bb. The staff contains a melodic line starting with a whole rest, followed by quarter and eighth notes.

Vibrafon

Musical staff for Vibrafon, 4/4 time signature, key of Bb. The staff contains a melodic line with eighth and quarter notes.

Trombon

Musical staff for Trombon, 4/4 time signature, key of Bb. The staff contains a melodic line starting with a whole rest, followed by quarter and eighth notes.

Bas

Musical staff for Bas, 4/4 time signature, key of Bb. The staff contains a rhythmic line of eighth notes.

Trummor

Musical staff for Trummor, 4/4 time signature, key of Bb. The staff is empty.

Continuation of the musical score for the first system. It includes staves for Flöjt 1, Flöjt 2, Vibrafon, Trombon, Bas, and Trummor. A circled 'f' dynamic marking is present at the beginning of the first staff. The music continues with various rhythmic patterns and melodic lines across the instruments.

Flöjt 1



Flöjt 2



Vibrafon



Trombon



Bas



Trummor



F  
I  
N  
E

Rialabluesen partitur sida 3/7

(B)

Flöjt 1

Flöjt 2

Vibrafon *LEAD*

Trombon

Bas

Trummor

Flöjt 1

Flöjt 2

Vibrafon

Trombon

Bas

Trummor

①

Flöjt 1

Musical staff for Flöjt 1, showing notes and rests across three measures. The first measure has a whole note. The second and third measures have eighth notes, with a triplet of eighth notes in the third measure.

Flöjt 2

Musical staff for Flöjt 2, showing notes and rests across three measures. The first measure has eighth notes. The second and third measures have eighth notes with a triplet in the third measure.

Vibrafon

Musical staff for Vibrafon, showing notes and rests across three measures. The first measure has eighth notes. The second and third measures have eighth notes with a triplet in the third measure.

Trombon

Musical staff for Trombon, showing notes and rests across three measures. The first measure has eighth notes. The second and third measures have eighth notes with a triplet in the third measure.

Bas

Musical staff for Bas, showing notes and rests across three measures. The first measure has eighth notes. The second and third measures have eighth notes with a triplet in the third measure.

Trummor

Musical staff for Trummor, showing rests across three measures.

Musical staff for Flöjt 1 (continued), showing notes and rests across three measures. The first measure has a triplet of eighth notes. The second and third measures have eighth notes. A circled 'D' is written above the second measure.

Musical staff for Flöjt 2 (continued), showing notes and rests across three measures. The first measure has eighth notes. The second and third measures have eighth notes with a triplet in the third measure.

Musical staff for Vibrafon (continued), showing notes and rests across three measures. The first measure has eighth notes. The second and third measures have eighth notes with a triplet in the third measure. Handwritten text "SOLO AD LIB" and "Bb7" is present.

Musical staff for Trombon (continued), showing notes and rests across three measures. The first measure has eighth notes. The second and third measures have eighth notes with a triplet in the third measure.

Musical staff for Bas (continued), showing notes and rests across three measures. The first measure has eighth notes. The second and third measures have eighth notes with a triplet in the third measure. Handwritten text "Bb7" is present.

Musical staff for Trummor (continued), showing rests across three measures.

Flöjt 1

Flöjt 2

Vibrafon

Trombon

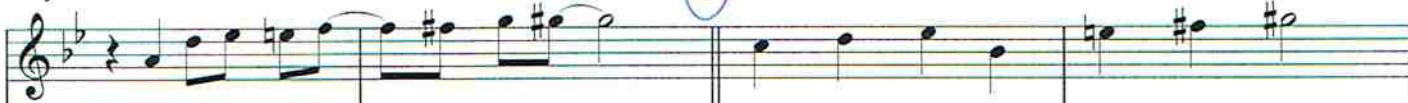
Bas

Trummor



Flöjt 1

E




Musical staff for Flöjt 1, showing a melodic line in the first measure of a four-measure phrase.

Flöjt 2



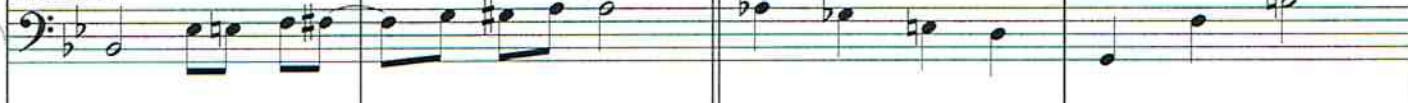
Musical staff for Flöjt 2, showing a melodic line in the first measure of a four-measure phrase.

Vibrafon (Bb)



Musical staff for Vibrafon, showing a whole rest in the first measure of a four-measure phrase.

Trombon



Musical staff for Trombon, showing a melodic line in the first measure of a four-measure phrase.

Bas



Musical staff for Bas, showing a melodic line in the first measure of a four-measure phrase.

Trummor



Musical staff for Trummor, showing a whole rest in the first measure of a four-measure phrase.



Musical score for the second system, showing the continuation of the four-measure phrase for Flöjt 1, Flöjt 2, Trombon, and Bas. The Vibrafon and Trummor parts remain at rest.

**DA CAPO  
AL FINE**