

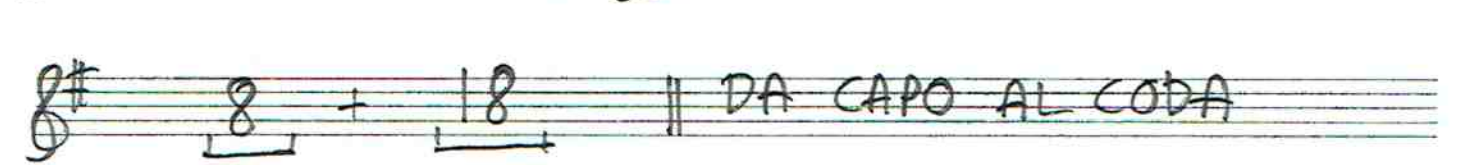
Altsex

# BARYTON BAGATELL

(9r 8)

Tenorsax

# BARYTON BAGATELL (9r8)



(Barytonsax)  
(under mediant: o)

# BARYTON BAGATELL

(or 8)

Musical notation for the first four staves. The first staff includes the word "SOLO" and an accent mark (^) over a note. The second staff is marked with a circled "A". The fourth staff ends with a double bar line and a circle with a slash through it.

Musical notation for the fifth staff, featuring a triplet of eighth notes and a circled "BC" above a measure. The word "SOLO" is written above the staff. Below the staff, the following chords are listed: G | Gm | E7 | E<sup>b</sup>7

Musical notation for the sixth staff, consisting of a sequence of chords: Em7 A7 | F#m7 H7 | Em7<sup>b5</sup> A7 | H7 || E7 D7 | Gm C7 |

Musical notation for the seventh staff, consisting of a sequence of chords: Dmaj7 C7 | H7 | Em7 D7 | C7 H7 B<sup>b</sup>7 A7 | D

Musical notation for the eighth staff, including first and second endings. The first ending is marked "1." and the second ending is marked "2." and "D". The word "SOLO" is written above the staff, and "SOLOT SLUT" is written below it. The staff ends with a double bar line and a circle with a slash through it.

Musical notation for the ninth staff, including a double bar line with "8+18" and the instruction "DA CAPO AL CODA".

Musical notation for the tenth staff, starting with a double bar line and a circle with a slash through it, followed by a measure with a "2" above it and a dynamic marking "f". The staff ends with a double bar line and a circle with a slash through it.

Trumpet

(gr 8)

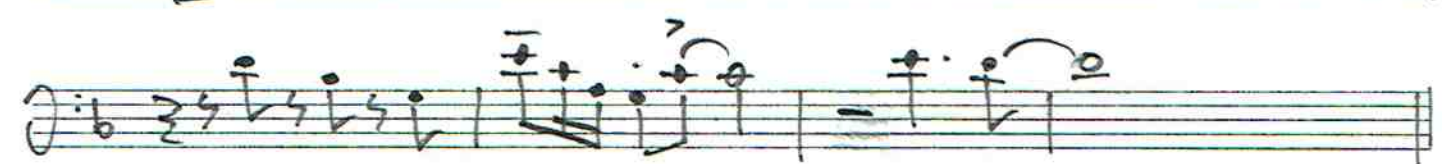
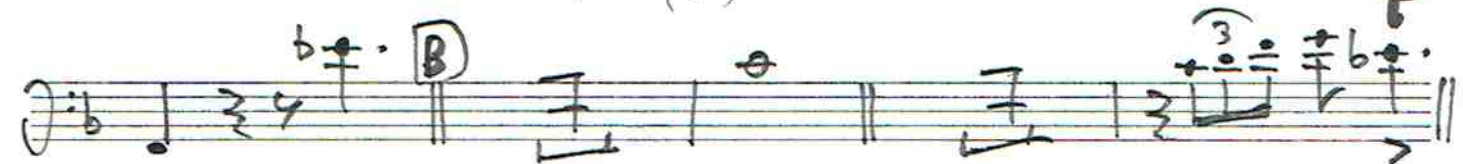
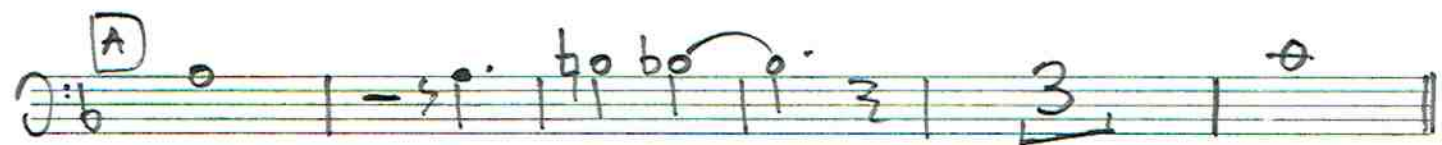
# ~ BARYTON BAGATELL ~

LEAD

DA. CAPO  
ALL ~~X~~

Trombon

# BARYTON BAGATELL (gr 8)



Piano (gr. 8 jan-03)

# BARYTON BAGATELL (Dickens #)

SIDA 1/2

## INTRO/INTERLUDE [A]

Measures 1-3 of the Intro/Interlude section. Measure 1 contains a whole rest in both staves. Measure 2 features a Bb major 7 chord in the bass and a Bb minor 6 chord in the treble, with a 'BARYTON' annotation and a triplet of eighth notes. Measure 3 features G13, Gb13, and G#13 chords in the bass and a whole note in the treble.

Measures 4-7 of the Baryton section. Measure 4: Gm7 C7. Measure 5: Am7 D7. Measure 6: Gm7b5 C7. Measure 7: D7. Measure 8: Db7 Gb13. Measure 9: F13. Measure 10: Am Bb Eb7 E7. The treble staff contains a melodic line with accents and slurs.

Measures 11-14 of the Baryton section. Measure 11: Fmaj7 Eb9 D9. Measure 12: Gm7 C7. Measure 13: Eb13 D13 Db13 C13. Measure 14 contains a whole rest and a circled '3' with a slash, indicating a triplet.

## [B] BARYTON SOLO (+komp)

Measures 15-20 of the Baryton Solo section. Measure 15: H7#9. Measure 16: Bbmaj7. Measure 17: Bbm6. Measure 18: G7. Measure 19: Gb7. Measure 20: Gm7 C7. Measure 21: Am7 D7.

Measures 22-26 of the Baryton Solo section. Measure 22: Gm7b5 C7. Measure 23: D7. Measure 24: Gb7 F7. Measure 25: Bbm Eb7. Measure 26: F Eb7. Measure 27: D7.

## ens. bakgrunder: [C] (Baryton continues)

Measures 28-33 of the Ensemble Background section. Measure 28: Gm7 C7. Measure 29: Eb7 D7 Db7 C7. Measure 30: F. Measure 31: F. Measure 32: H7. Measure 33: Bbmaj7. Measure 34: Bbm6.

Piano (gr.8  
jun-03)

# BARYTON BAGATELL

(Dickon #)

SIDA 2/2

Chords: G7 G13#11 G<sup>b</sup>7 Gm7 C7 Am7 D7 Gm7<sup>b5</sup> C7 D7

Chords: G<sup>b</sup>9 F9 B<sup>b</sup>6 E<sup>b</sup>9 Am7 (Fmaj7) E<sup>b</sup>9 D9<sup>b5</sup> D9 Gm7 C7 E<sup>b</sup>7 D7 D<sup>b</sup>7 C7

Chords: F F H7 B<sup>b</sup>maj7 B<sup>b</sup>6 G13 G<sup>b</sup>13

1st x TUTTI  
2nd x SOLO

Chords: Gm7 C7 Am7 D7<sup>(69)</sup> Gm7<sup>b5</sup> C13 D7 G<sup>b</sup>7 F7 B<sup>b</sup>m E<sup>b</sup>7

(SOLO BOTH X'S)

Chords: F E<sup>b</sup>7 D7 Gm7 C7 E<sup>b</sup> D<sup>b</sup> C F F H7 F A<sup>b</sup> Gm A<sup>b</sup>

1. 2.

D.S. al Fine

Chords: E<sup>b</sup>13#11 E13#11 F13<sup>b5</sup>

f. (piano/bas/drums)

Notblocket

BAS

# BARRYTONBAGATELL (gr 8)

[A] 1-3 (Walking in da capo)

[B] [C] Mer Walkinglikt (4 chorus)

([B] [C] = barytonsolo [D] = ens. halva [D] + [E] = pianosolo)



Trummer

# BARYTON BAGATELL (gr 8)

mf FILL

A

mp FILL

B baryton solo komp 7 (FILL)

C komp 3 (FILL)

D BIG BAND TUTTI MED KOMP/FILLS

pianosolo komp 8 + 18 DA CAPO AL CODA

JATTE-FILL IN f. (piano bass drums)

# Barytonbagatell

(jun-03)  
9r8

(1)

Intro

A  
Börja på  
ett Bb ackor-  
den

tr

as

ts

tb

bar

bas

(bar-feature)

A

Handwritten musical notation for six instruments: **trp<sup>b</sup>**, **as<sup>b</sup>**, **ts<sup>b</sup>**, **tb<sup>b</sup>**, **bar<sup>b</sup>**, and **bas<sup>b</sup>**. The notation is spread across six staves. The first staff (trp<sup>b</sup>) starts with a circled 'A' and contains a treble clef, a key signature of one flat, and a series of notes including a quarter rest, a quarter note, a dotted quarter note, and a half note. The second staff (as<sup>b</sup>) contains a treble clef, a key signature of one flat, and notes including a quarter rest, a quarter note, a dotted quarter note, and a half note. The third staff (ts<sup>b</sup>) contains a treble clef, a key signature of one flat, and notes including a quarter rest, a quarter note, a dotted quarter note, and a half note. The fourth staff (tb<sup>b</sup>) contains a treble clef, a key signature of one flat, and notes including a quarter rest, a quarter note, a dotted quarter note, and a half note. The fifth staff (bar<sup>b</sup>) contains a treble clef, a key signature of one flat, and notes including a quarter rest, a quarter note, a dotted quarter note, and a half note. The sixth staff (bas<sup>b</sup>) contains a bass clef, a key signature of one flat, and notes including a quarter rest, a quarter note, a dotted quarter note, and a half note.

Handwritten musical notation for guitar chords on a six-line staff. The chords are: **B<sup>b</sup>**, **B<sup>b</sup>m**, **G7**, **G7**, and **G<sup>b</sup>7**.

Solo: B<sup>b</sup> B<sup>b</sup>m G7 G<sup>b</sup>7

Handwritten musical notation on six staves. The staves are labeled on the left as follows:

- Staff 1:  $trf^b$
- Staff 2:  $asf^b$
- Staff 3:  $tsf^b$
- Staff 4:  $tbf^b$
- Staff 5:  $barf^b$  (contains a complex melodic line with many notes and accidentals)
- Staff 6:  $basf^b$

The notation includes various symbols such as flats ( $b$ ), a sharp ( $\sharp$ ), and a double bar line ( $\parallel$ ) on the third staff. The melodic line in the fifth staff is particularly dense with notes and accidentals.

Handwritten guitar chord notation on a set of six staves:

$Gm7 \frac{3}{4} C7$  |  $Am7 D7$  |  $Gm7^{b5} C7$  |  $D7$

Handwritten guitar chord notation for a solo section:

Solo: |  $Gm7 C7$  |  $Am7 D7$  |  $Gm7^{b5} C7$  |  $D7$  |

Handwritten musical notation for six instruments: **trp b**, **as f**, **ts f**, **tb f**, **bar f**, and **bas f**. The notation includes notes, rests, and dynamic markings such as accents (^) and slurs.

D7 G7 F7 Am Bm Eb7 E7 F#7 Eb7 D7

Solo: G7 F7 | Bm Eb7 | F#7 Eb7 | D7

Handwritten musical notation for six instruments: **trp b**, **as f**, **ts f b**, **tb f b**, **bar f b**, and **bas f b**. Each instrument part is written on a five-line staff. The notation includes various notes, rests, and accidentals (sharps and flats) across four measures. Some notes are marked with a '+' sign. The notation is somewhat sketchy and appears to be a first draft or a working manuscript.

Handwritten chord progression on a five-line staff:

Gm7 C7 | Eb7 D7 Db7 C7 | F#m7 Eb7 C7 | /

Solo: Gm7 C7 | Eb7 D7 Db7 C7 | F# | /

(F#) → not a chord

6

(fortangning)

trf<sup>b</sup>

asf<sup>b</sup>

tsf<sup>b</sup>

tf<sup>b</sup>

barf<sup>b</sup>

basf<sup>b</sup>

Handwritten musical score for six instruments: trumpet (trf<sup>b</sup>), alto sax (asf<sup>b</sup>), tenor sax (tsf<sup>b</sup>), trombone (tf<sup>b</sup>), baritone sax (barf<sup>b</sup>), and bass sax (basf<sup>b</sup>). The score is written on six staves. A circled 'B' is written above the second measure. The bass sax staff includes the annotation '(H7) solo'. The notation includes notes, rests, and chord symbols such as F<sup>#</sup>, F<sup>b</sup>, and F.

Two sets of empty musical staves, each consisting of five lines.

(c)

Handwritten musical score for six instruments: trumpet, alto saxophone, tenor saxophone, trombone, baritone saxophone, and bass saxophone. The score is written on six staves with various notes, rests, and articulation marks.

- tr**: Trumpet part with notes and rests.
- as**: Alto saxophone part with notes and rests.
- ts**: Tenor saxophone part with notes and rests.
- tb**: Trombone part with notes and rests.
- bar**: Baritone saxophone part, currently blank.
- bass**: Bass saxophone part, currently blank.

Two sets of empty musical staves at the bottom of the page.



8

trp

Handwritten musical notation for the trumpet staff. It features a treble clef, a key signature of two flats (Bb and Eb), and a 4/4 time signature. The notation includes quarter notes, eighth notes, and rests across five measures. The final measure contains a triplet of eighth notes with an accent mark.

as

Handwritten musical notation for the alto saxophone staff. It features a treble clef, a key signature of two flats (Bb and Eb), and a 4/4 time signature. The notation includes quarter notes, eighth notes, and rests across five measures. The final measure contains a triplet of eighth notes with an accent mark.

ts

Handwritten musical notation for the tenor saxophone staff. It features a treble clef, a key signature of two flats (Bb and Eb), and a 4/4 time signature. The notation includes quarter notes, eighth notes, and rests across five measures. The final measure contains a triplet of eighth notes with an accent mark.

tb

Handwritten musical notation for the trombone staff. It features a bass clef, a key signature of two flats (Bb and Eb), and a 4/4 time signature. The notation includes quarter notes, eighth notes, and rests across five measures. The final measure contains a triplet of eighth notes with an accent mark.

bar

An empty musical staff for the baritone saxophone, featuring a bass clef and a key signature of two flats (Bb and Eb).

bas

An empty musical staff for the bass saxophone, featuring a bass clef and a key signature of two flats (Bb and Eb).

SOLO END

Two empty musical staves at the bottom of the page, each with a five-line staff and a key signature of two flats (Bb and Eb).

①

trp  $\text{F}^{\flat}$

as  $\text{F}^{\flat}$

ts  $\text{F}^{\flat}$

tb  $\text{F}^{\flat}$

bar  $\text{F}^{\flat}$

bas  $\text{F}^{\flat}$

Handwritten musical score for six instruments: trumpet (tr), alto saxophone (as), tenor saxophone (ts), trombone (tb), baritone saxophone (bar), and bass saxophone (bas). The score is written on six staves, each with a key signature of one flat (Bb).

The notation includes various notes, rests, and articulation marks. The first measure shows a melodic line for each instrument. The second measure contains the instruction "piano" and a dynamic marking "8-14".

The bass saxophone part includes the following chordal notation in the second measure:

2 <sup>1</sup> x	2 <sup>1</sup> x	2 <sup>1</sup> x	2 <sup>1</sup> x
F	F	Gm7	F

The score concludes with a double bar line and a fermata over the final note.

Three empty musical staves at the bottom of the page, with a circled symbol and some faint markings on the right side.



Handwritten circled number '6'.

Handwritten musical score for six staves, labeled on the left as **trp**, **as**, **ts**, **tb**, **bar**, and **bas**. The score is divided into two measures by a vertical bar line. The first measure contains various notes and rests, with some notes marked with a '3' above them. The second measure contains notes with stems pointing downwards, some with accidentals (sharps and flats), and a dynamic marking 'f'. The staves are connected by a vertical line on the right side.

